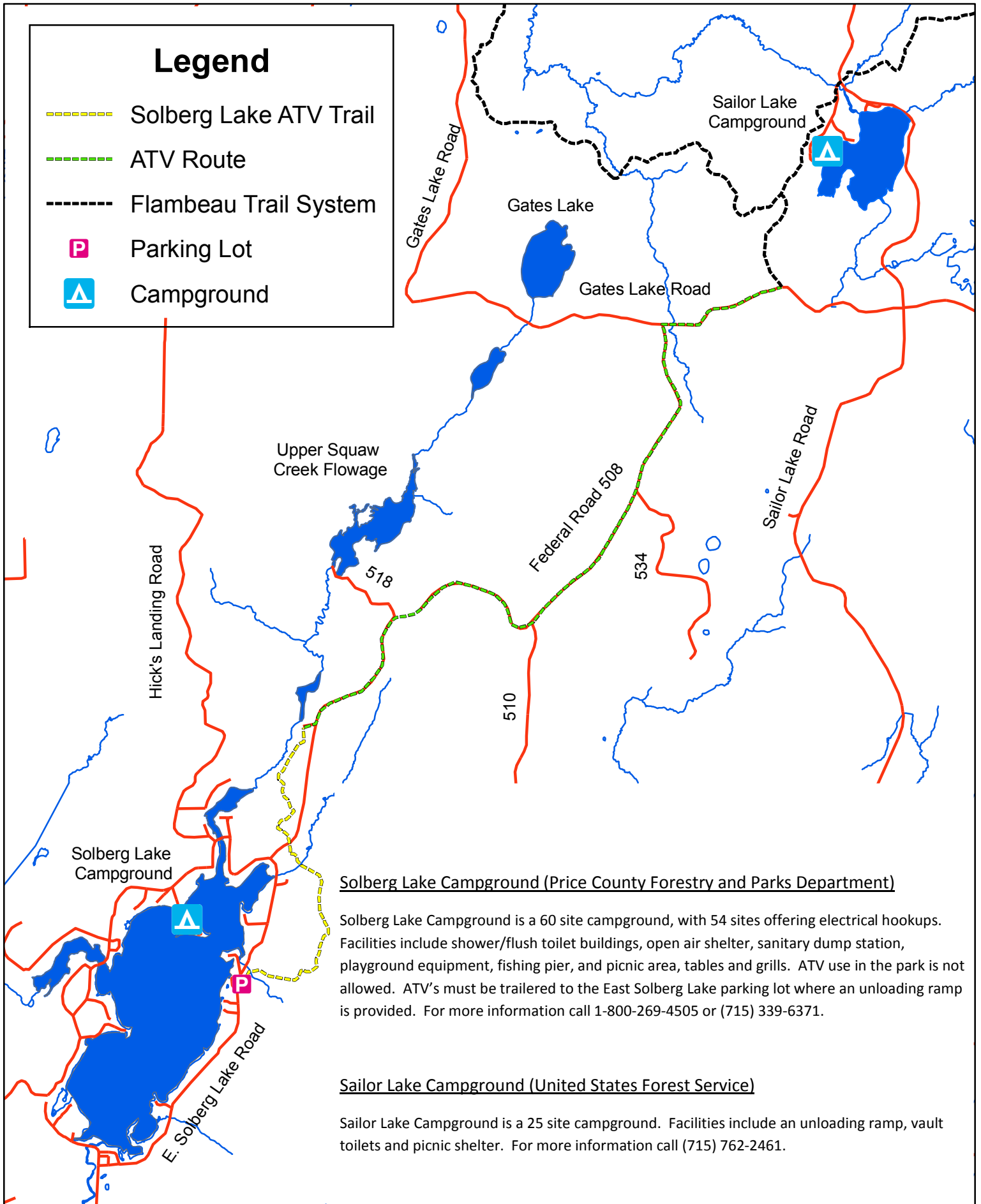


Solberg Lake to Sailor Lake ATV Trail



Solberg Lake Campground (Price County Forestry and Parks Department)

Solberg Lake Campground is a 60 site campground, with 54 sites offering electrical hookups. Facilities include shower/flush toilet buildings, open air shelter, sanitary dump station, playground equipment, fishing pier, and picnic area, tables and grills. ATV use in the park is not allowed. ATV's must be trailered to the East Solberg Lake parking lot where an unloading ramp is provided. For more information call 1-800-269-4505 or (715) 339-6371.

Sailor Lake Campground (United States Forest Service)

Sailor Lake Campground is a 25 site campground. Facilities include an unloading ramp, vault toilets and picnic shelter. For more information call (715) 762-2461.